




# first tee

greater dallas



*Positively impacting the lives of Dallas-area young people by providing safe places, caring adults, and educational programs that build character, instill life-enhancing values, and promote healthy choices through the game of golf.*



# 2022 Parent Orientation

**First Tee**, originally initiative of the World Golf Foundation, is a not-for-profit, youth development organization headquartered at the World Golf Village in St. Augustine, Florida.



**First Tee - Greater Dallas**, one of the more than 140 independently-operated, national and international chapters of First Tee, is a community-based organization designed to impact the lives of young people by providing educational programs that build character, instill life-enhancing values and promote healthy choices through the game of golf.

**The First Tee Founding Partners** include the game's most respected and influential organizations:

PGA TOUR, USGA, LPGA, PGA of America, and The Masters Tournament. Former President George W. Bush serves as Honorary Chairman of First Tee and Annika Sorenstam serves as National Spokesperson for The First Tee Nine Healthy Habits.



## What makes us different?



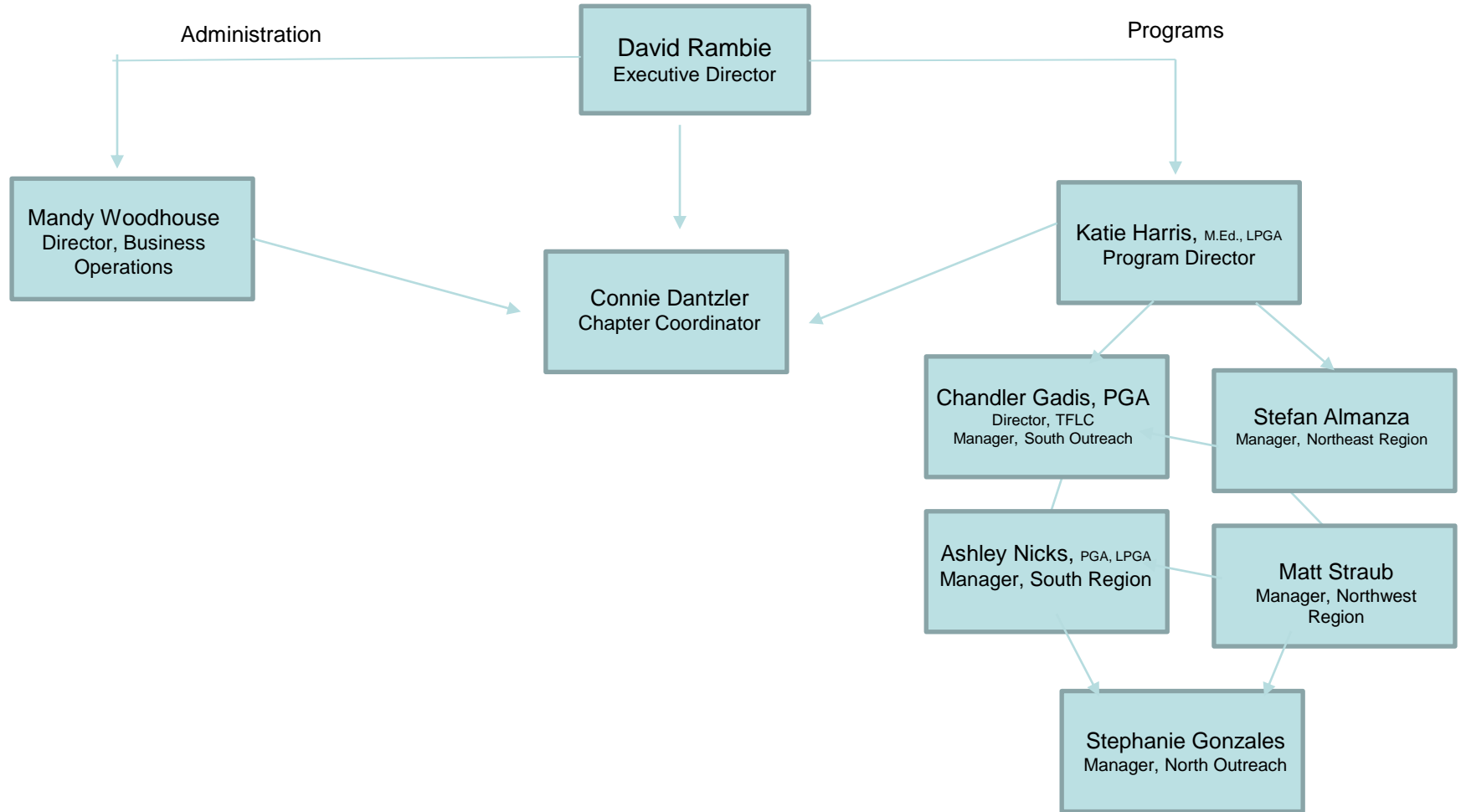
**The Life Skills Experience** is one of the *unique* features that allows The First Tee program to truly make a difference in the lives of young people.

Through the **First Tee Golf and Life Skills Experience**, participants learn about skills and values for everyday life such as *responsibility, courtesy, decision-making, goal-setting, the importance of maintaining a positive attitude, and the importance of showing respect for others.*



The lessons learned through **The Experience** are lessons that will remain with young people well into their future, regardless of how long they play golf as a recreation!

# How does our organization work internally?



We have 9 staff members, 4 administrative and 6 program staff. Five of our six program staff are intended to be spending the majority of their time teaching programming.





## Where does our funding come from?



We are mainly funded through internally ran fundraising events, corporate sponsorship, locally cultivated trustees, local and national grants, and finally corporate and individual giving. We do not receive government or federal funding unless through a specifically applied for grant.

We are under the umbrella of the Texas Golf Association and have a good partnership with the North Texas PGA section and the City of Dallas Parks and Rec department but are not a part of either of their businesses.

The First Tee is not a part of Tiger Woods' foundation.



# Target Audience



***Anyone age 5- high school graduate, with an emphasis placed on serving those who previously have not had exposure or access to the game of golf and its life-enhancing values.***

Program Partners include: Dallas ISD, Irving ISD, CFBISD, Frisco ISD, Wylie ISD, Rockwall ISD, Lewisville ISD, Dallas Parks and Recreation Department, Dallas CAN! Academies, Girls Inc, YMCA, Boys and Girls Clubs, and many others.

Approximately 121,565 youth participated in TFTD programming in 2019. *(Including 117,000+ via our National School Program.)*

# First Tee School Program



Did you know that 160+ elementary schools in the Dallas metroplex have the capability to teach First Tee in their PE classes?

Districts with equipment, curriculum and training include:

## Dallas County/South Region

Dallas ISD – certain schools

Cedar Hill ISD – whole district

Red Oak ISD – Red Oak & Wooden Elementary

## West Region/Denton County

Irving ISD – certain schools

Carrollton-Farmers Branch ISD – whole district

Lewisville ISD – whole district

## Collin County/East Region

Frisco ISD – whole district

Wylie ISD – whole district

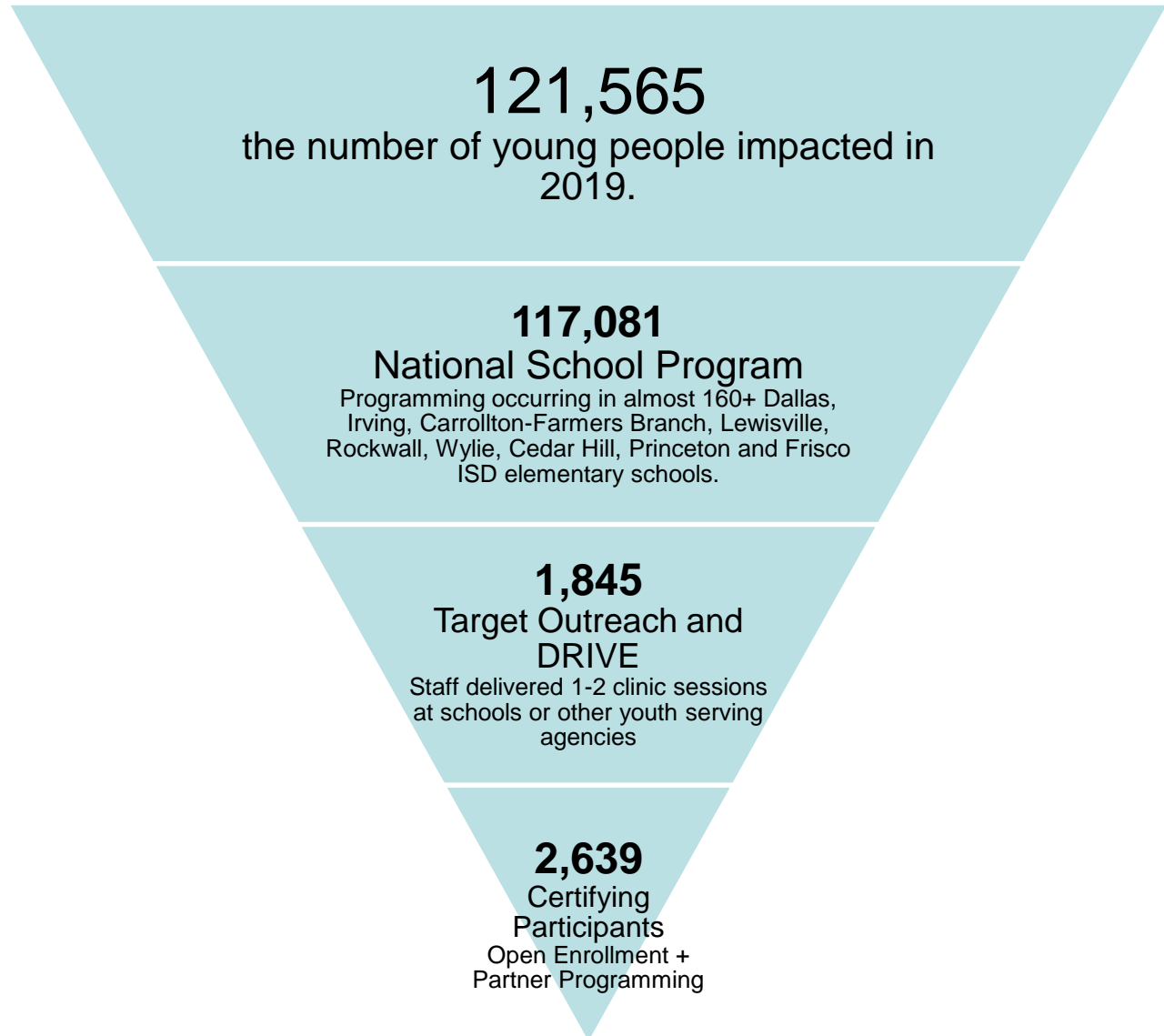
Rockwall ISD – whole district

Princeton ISD – whole district

Prosper ISD – whole district



# Participant Breakdown





# When do we program?

<p>6</p> <ul style="list-style-type: none"> <li>9 ■ Plano Boys and Girls Club</li> <li>9 ■ Girls Inc - West</li> <li>10 ■ Tenison Park-Dallas Parks &amp; R</li> <li>12p ■ Tenison Park-Dallas Parks &amp;</li> <li>6p ■ Golf Club of McKinney - PLAYe</li> </ul>	<p>7</p> <ul style="list-style-type: none"> <li>9 ■ Frisco Boys and Girls Club</li> <li>9 ■ Girls Inc - Love Field</li> <li>10 ■ Keeton Rec Group 1</li> <li>11 ■ Irving YMCA</li> <li>12p ■ Keeton Rec Group 2</li> <li>+6 more</li> </ul>	<p>8</p> <ul style="list-style-type: none"> <li>9 ■ Plano Boys and Girls Club</li> <li>9 ■ Girls Inc - Oak Cliff</li> <li>10 ■ Cedar Crest Group 1</li> <li>12p ■ Cedar Crest Group 2</li> <li>6p ■ Trails of Frisco - All Levels</li> <li>6p ■ Supervised Practice-Frisco PG</li> </ul>	<p>9</p> <ul style="list-style-type: none"> <li>9 ■ Frisco Boys and Girls Club</li> <li>9 ■ Girls Inc - South</li> <li>10 ■ Steven @CC Group 1</li> <li>10 ■ Stevens Group 1</li> <li>12p ■ Steven @CC Group 2</li> <li>+3 more</li> </ul>	<p>10</p> <ul style="list-style-type: none"> <li>11 ■ Cedar Crest-B.E.D/St.Phillips/C</li> </ul>	<p>11</p> <ul style="list-style-type: none"> <li>9 ■ Twin Wells - PLAYer/Par/Birdie</li> <li>10 ■ Cedar Crest - PLAYER</li> <li>10 ■ Old Brickyard - All Levels</li> <li>10 ■ Tenison Park - PLAYer/Par</li> <li>10 ■ Mesquite GC - PLAYer/Par</li> <li>+8 more</li> </ul>
<p>13</p> <ul style="list-style-type: none"> <li>9 ■ Plano Boys and Girls Club</li> <li>9 ■ Girls Inc - West</li> <li>10 ■ Tenison Park-Dallas Parks &amp; R</li> <li>12p ■ Tenison Park-Dallas Parks &amp;</li> <li>2:30p ■ Heart House at Top Golf</li> <li>+2 more</li> </ul>	<p>14</p> <ul style="list-style-type: none"> <li>9 ■ Frisco Boys and Girls Club</li> <li>9 ■ Girls Inc - Love Field</li> <li>10 ■ Keeton Rec Group 1</li> <li>11 ■ Irving YMCA</li> <li>12p ■ Keeton Rec Group 2</li> <li>+7 more</li> </ul>	<p>15</p> <ul style="list-style-type: none"> <li>9 ■ Plano Boys and Girls Club</li> <li>10 ■ Girls Inc on the Course!</li> <li>10 ■ Cedar Crest Group 1</li> <li>12p ■ Girls Inc on the Course!</li> <li>12p ■ Cedar Crest Group 2</li> <li>+2 more</li> </ul>	<p>16</p> <ul style="list-style-type: none"> <li>9 ■ Frisco Boys and Girls Club</li> <li>10 ■ Girls Inc @ Top Golf</li> <li>10 Luna Vista</li> <li>10 ■ Stevens Group 1</li> <li>12p ■ Girls Inc @ TopGolf</li> <li>+4 more</li> </ul>	<p>17</p> <ul style="list-style-type: none"> <li>11 ■ Cedar Crest-B.E.D/St.Phillips/C</li> </ul>	<p>18</p> <ul style="list-style-type: none"> <li>9 ■ Twin Wells - PLAYer/Par/Birdie</li> <li>10 ■ Cedar Crest - PLAYER</li> <li>10 ■ Old Brickyard - All Levels</li> <li>10 ■ Tenison Park - PLAYer/Par</li> <li>10 ■ Mesquite GC - PLAYer/Par</li> <li>+8 more</li> </ul>
20	21	22	23	24	25

## Year-round / 5 days per week

Programs and events are structured based on 8 week seasons.

Open Enrollment Saturdays: St. Patricks Day to November

Open Enrollment Weeknights: Spring Break to Halloween

Summer Camps: Held in the months of June and July

Program times include: in-school, after-school partner, weekends, weeknights, and summer camps.

# Robert C Vaughn Leadership & Learning Center



**We have a home!**

**FT-GD completed construction on our Trinity Forest Learning Center in Southeast Dallas in 2018.**

**Special events like Parent-Child, Girls Golf Days and others are held at this facility, as well as specialized programming like our Pee-Wee offerings.**

**Please make sure to see our home facility!**



# Updated Curriculum Information

**By 2023, all of First Tee is moving solely to age-based programming instead of skill-based levels.**

FT-GD is starting this change over this fall to our updated, age based curriculum structures.

- We will no longer use levels (PLAYer, PAR, Birdie, Eagle, Ace) to determine placement
- Students will register and be placed in a program based on their age. The age groupings will be 7-9, 10-11, 12-13, and 14+
- Kids will progress through these levels based on their age. They can celebrate achievements and skill progression by earning badges. The badging system will be available in 2023.





# National Opportunities

## Game Changer & Girls Academies

Each summer, select participants from around the country attend the week-long Academies held on esteemed college campuses such as Kansas State, Arizona State, Richmond, University of Minnesota, Michigan State, and the University of Oregon.



## Pure Insurance Championship

78 elite TFT participants are selected to play alongside Champions Tour players at Pebble Beach in this unique Pro-Jr-Am tour event.

## And Others....

There are 14 total national opportunities that our advanced levels are able to apply and be selected for every year.



## How can I go to national opportunities?

Participants must meet certain criteria to be able to be eligible to apply for national opportunities. There is an application process for each opportunity, and participants are selected to attend by a national committee.

### Eligibility Requirements - Participants Must:

- At least have completed their freshman year of high school, and be 14 years or older
- Have attended programming with The First Tee for at least three (3) full years of programming
- Be currently active in the applying year

Certain opportunities require a certain handicap, age, year in high school, or gender to apply. Please ask if you would like more information.



# TFTD Perks



## **\$3 Range Balls & \$3 Courses**

FTGD participants can purchase ranges balls to practice for \$3 at most TFTD facilities.

Advanced participants can play the City of Dallas courses for \$3 by purchasing a membership card.

## **Sports Tickets**

### **Rangers, Mavs, Stars, Oh My!**

FTGD receives free tickets to sporting events throughout the year, including the North Texas LPGA Shootout.



## **FTGD Special Events**

Occasionally, FTGD will offer social events to bring our participants and families closer together.

In December, we also offer The End of the Year Banquet as our fancy awards lunch to celebrate the year!







# Long-term TFTD Perks

Since its inception in 2011, our local TFTD Scholars Program has awarded **over \$850,000 in college scholarships** to 120 of the program's top graduates.



National Scholarships are also available through National Opportunities, such as First Tee Scholars program, America's Future by Coca-Cola, and Outstanding Participant of the Year award.





## **Should I stay or should I go?**

Parents are welcome to stay and watch programming during the program time if they so choose. Parents are expected to check in and check out their child for safety reasons, but you are welcome to leave if need be.

Do not drop your participant off alone or expect them to walk out into the parking lot to find you at the end of class. This is a safety issue, and we prefer that you let the lead coach of the facility know when you pick up your child similar to when you drop off.

## **Can I help if I want to come and watch?**

We appreciate your interest to get involved! If you'd like to become a volunteer coach, please contact Katie Shook and complete the required volunteer background and training process. Otherwise, please stay in an observatory role, and if you happen to catch something that we haven't, please let us know.

## **How can I help outside of coaching?**

We are happy to have help keep safety lines and keep everyone organized through transitions if you're observing during program times. We also have need for event volunteers if you're interested in getting formally involved.



# Participant Expectations

## What should I wear?

Participants are not required to wear a particular attire to programming. Our only request is closed-toed shoes and weather-appropriate clothing.

## Should I bring anything?

A water bottle is always a good idea, but nothing else is necessary except a good attitude and a willingness to learn!

## What if I can't make it?

We are happy to help you with coordinating a make-up day as best we can – please contact your regional program manager if you'd like to attend another class time for a one-time make-up. Please make sure that the class that you choose to attend is of your correct level and age range.

# FTGD Social Media



Photos from events,  
registration posts, and more!



All of our Facebook posts  
simul-post to our Twitter  
account.



Photos from events and more  
connectivity to our photo-happy  
teens.

# Weather Hotlines

South Region	Northwest Region	Northeast Region
214-303-1910	214-303-1826	214-303-1825
Trinity Forest LC	Luna Vista	Stonebriar
Prairie Lakes	Prestonwood	Twin Creeks
	Lake Park	Plantation

Weather may become an issue throughout the year. **Please dress accordingly.** We do not conduct programs during times of **rain/lightning** or when the temperature is **less than fifty (50) degrees**. For the latest updates, please call the numbers listed. We will also make every attempt to post inclement weather information to our social media approximately two hours prior to cancelled programs.

*\*\*We only plan for one weather make-up in our scheduling of programming in a season\*\**





## What about....

- **Tournaments?**

FT-GD has a beginning level tournament system called The First Tour!

Contact Matt Straub for more information - [mstraub@firstteedallas.org](mailto:mstraub@firstteedallas.org)

-NTPGA

-US Kids

-Pinseekers (at Brookhaven)

- **Clubs?**

FT-GD has clubs to purchase! Contact our office for purchase.

-[PGA TOUR Superstores](#) (Plano & Frisco)

-[Dallas Golf](#) (East Dallas)

- **Summer camps?**

We have LSE Summer Camps available for summer typically, depending on space available at courses and staffing structures.

# How You Can Help...

## Participate

Enroll a child into the program...



## Volunteer

Sign up as a coach/mentor or become a The First Tee Ambassador...

## Donate

- Get Your Company Involved
- Become a Corporate Partner
- Become an Individual Donor



# Open Enrollment Program Manager's Contacts

- **Matt Straub**  
Northwest Region

**214-924-3708**

[mstraub@firstteedallas.org](mailto:mstraub@firstteedallas.org)

Luna Vista  
Lake Park  
Prestonwood CC



- **Stefan Almanza**  
Northeast Region

**915-433-0196**

[salmanza@firstteedallas.org](mailto:salmanza@firstteedallas.org)

Stonebriar  
Twin Creeks  
Plantation



- **Ashley Nicks**  
South Region

**314-560-5452**

[anicks@firstteedallas.org](mailto:anicks@firstteedallas.org)

Trinity Forest LC  
Prairie Lakes

